

# IDC4 software update

## **CAR 56**



More than 56,000 new Selections

**TEXA**

The **IDC4 CAR 56** update is the result of a long and fruitful work during which TEXA's technicians completed and optimised very important diagnostic developments.

IDC4 CAR 56 includes over **56,000** new possible selections for the most important makes on the international market: **ABARTH, ACURA, ALFA ROMEO, AUDI, BMW, CHERY, CHEVROLET, CHRYSLER, CITRÖEN, DACIA, DAEWOO, DODGE, DR, FIAT, FORD, HONDA, HYUNDAI, INFINITI, JAGUAR, JEEP, KIA, LANCIA, LAND ROVER, MASERATI, MERCEDES-BENZ, MINI, NISSAN, OPEL (GM), PAGANI, PEUGEOT, PORSCHE, RENAULT, RENAULT SAMSUNG, SEAT, SKODA, SMART, SSANGYONG, SUBARU, VOLKSWAGEN, VOLVO** and many more.

The update offers **new models** for the **SUPERCAR** category also: ALFA ROMEO 8C, CHEVROLET Corvette Convertible, DODGE Viper. The developments completed for the **electric vehicles** BMW i3, BMW i8, NISSAN Leaf, VOLKSWAGEN Golf VII and for the hybrid vehicles CITROEN DS 5, HONDA Civic, CR-Z, Insight; PEUGEOT 3008 and 508 are also very important.

As far as the new software features are concerned, the PRINT SCREEN and TPMS Repair, **the new Special Functions**, the **Automatic Vehicle Search**, the **Rec&Play function** have been developed.

Following are just a few of the many new diagnostic features included in this CAR software version that take into consideration the functions mostly requested by workshops and that are dedicated to the most widespread makes:

## MAIN NEW DIAGNOSTIC FEATURES (systems)

### ALFA ROMEO (SUPERCAR)

- Airbag
- Body computer
- A/C
- Imperial node
- Driver's side door
- Passenger's side door

### CHEVROLET (SUPERCAR)

- Steering lock
- Power steering
- Keyless go system

### DODGE (SUPERCAR)

- Gateway
- Driver's side door
- Passenger's side door
- Tyre pressure
- Audio amplification system

### PORSCHE (SUPERCAR)

- Airbag
- Diesel injection
- Instrumentation

### ABARTH

- Park assist
- A/C
- Auxiliary heating
- Instrumentation

### AUDI

- ABS
- Structure-borne sound actuator
- Automatic transmission
- Petrol injection
- Diesel injection
- Tyre pressure
- Switchover board (Power unit)

- Electronic information system 1
- Electric Traction

### BMW

- ABS
- Airbag
- Park assist
- Lane change assist
- Radio
- Hybrid battery
- Body computer
- Automatic transmission
- Right headlight control unit
- Left headlight control unit
- Electric motor control unit
- Emergency call
- A/C
- Dynamic drive control
- Multi-function display

- Front right shock absorber electronics
- and much more...

#### **CHERY**

- Airbag
- Petrol injection

#### **DAEWOO**

- ABS
- Automatic transmission
- Petrol injection
- LPG injection

#### **INFINITI**

- Airbag
- Park assist

- Lane keeping assist
- Approaching vehicle sound for pedestrians
- Hybrid battery
- Seat belt command control unit
- Obstacle detection control unit, right side
- Obstacle detection control unit, left side
- Distance control
- Multi-function display
- EV Control System
- Parking brake
- Gateway
- and much more...

#### **SUBARU**

- ABS
- A/C
- Multi-function display
- Occupant detection system

#### **VOLVO**

- ABS
- Body computer
- A/C
- Traction control
- Multi-function display
- Petrol injection
- Diesel injection
- Seat adjustment.

## **NEW MODELS for the SUPERCAR environment**

**ALFA ROMEO:** 8C [07>09] 4.7i V8 Kat; 8C [08>10] Spider 4.7i V8 Kat.

**DODGE:** Viper [12>] (VX) SRT Coupè 8.4i V10 Kat.

**CHEVROLET:** Corvette Convertible [14>] 6.2i V8 Kat; Corvette Coupe' [14>] 6.2i V8 Kat.

**PORSCHE:** Cayenne [02>07] 3.2i V6 Kat, 4.5i V8 Kat, 4.5i V8 Turbo Kat, [07>10] 3.0 V6 TDI, [10>] 3.0i V6 Hybrid Kat.

## **NEW ELECTRIC VEHICLES**

**BMW:** i3 [13>]

**NISSAN:** Leaf [11>]

**SMART:** Fortwo [07>] EV Cabrio

**VOLKSWAGEN:** Golf VII [14>] (5GE) EV

For further details on these functions and on their applicability to vehicles, visit:  
[www.texa.com/coverage](http://www.texa.com/coverage)

# MAIN NEW DIAGNOSTIC FEATURES (functions)

## LANGUAGE CHANGE

- **AUDI** A1 [12>] Sportback 1.4i 16v TFSI Kat, 2.0 16v TDI; A3 [03>13] 1.8i 16v TFSI Kat, 2.0i 16v TFSI Kat; A6 [11>] Avant 3.0 V6 TDI quattro; A7 [10>] Sportback 3.0 V6 TDI quattro.
- **BMW** 1 [07>12] Coupè 118 d, 120i Kat; 3 [05>11] 325xi Kat; X1 [09>] 16si Kat; Z4 [09>] 3.5si Kat.
- **CITROEN** C3 [02>05] 1.4i 16v Kat, 1.6i 16v Flex Kat; C 4 [04>10] 1.6i 16v Bio Flex Kat; C 5 [00>04] Break 3.0i V6 24v Kat; C8 [02>] 3.0i V6 24v Kat; DS3 [10>] 1.6 HDI; Xsara Picasso [99>10] 2.0i Kat.
- **DACIA** Dokker [12>] 1.6i Mpi 8v Kat; Duster [10>13] 1.5 dCi; Lodgy [12>] 1.6i 8v Kat Logan [13>] 0.9i 12v TCe Kat.
- **INFINITI** Q50 [13>] 2.2 D, 3.5i Kat Hybrid, 3.5i Kat Hybrid 4x4.
- **MERCEDES-BENZ** A [04>12] E-CELL, [12>] 160 CDI BlueEFFICIENCY, 200i Kat BlueEFFICIENCY; B [05>11] 220 F-CELL; C [07>] 63i AMG Kat; CLS [11>] Coupè 250 CDI BlueEFFICIENCY.
- **MINI** [13>] Paceman Cooper 1.6i 16v Kat, [13>] Paceman John Cooper Works 1.6i 16v Turbo Kat.
- **PEUGEOT** Partner Tepee [08>] 1.6 HDI; RCZ [10>] 1.6 16v HDI.

## KEY AND REMOTE

### CONTROL CODING

- **AUDI** S1 [13>] 2.0i 16v TFSI Kat quattro.
- **BMW** i3 [13>] electric; i8 [14>] 1.5i Turbo Kat eDRIVE; X1 [09>] 16si Kat.
- **DAEWOO** Kalos [02>05] 1.5i Kat; Leganza [97>02] 1.8i 16v Kat.
- **FIAT** Bravo [07>13] 1.8i 16v Flex Kat, [14>] Restyling 1.6 MJ 105; Idea [03>12] 1.9 MJ; Linea [07>] 1.4i Turbo 16v Kat; Strada [05>09] Restyling II 1.3i Mpi 8v Flex Kat.
- **HYUNDAI** Accent V [11>] 1.6i Kat; Atos Prime II [03>08] 1.0i 12v; Azera [06>11] 2.0 CRDi; Centennial [00>06] 3.0i V6; Equus [14>] Sedan 5.0i V8 GDi Kat.
- **SUZUKI** Sx4 [06>] 2.0i 16v Kat 4x4.
- **TOYOTA** 4-Runner IV [02>09] 4.7i V8 32v Kat 4WD; Auris [06>12] 1.8i 16v Kat.
- **VOLKSWAGEN** New Beetle [03>10] Cabrio 2.0i Kat.

## DPF REGENERATION

- **AUDI** A1 [12>] Sportback 2.0 16v TDI; A3 [03>13] 1.8i 16v TFSI Kat; A4 [07>] 3.0 V6 TDI quattro; A5 [07>] Coupe' 3.0 V6 TDI; A7 [10>] Sportback 3.0 V6 TDI quattro; Q3 [11>] 2.0 16v TDI quattro; Q7 [06>] 3.0 V6 TDI quattro.
- **FORD** Focus [11>] Turnier 2.0 TDCi; Galaxy [06>] 2.2 TDCi; Mondeo [06>] Turnier 2.2 TDCi; S-Max [06>] 2.2 TDCi.
- **HONDA** Accord [08>] Tourer 2.2 i-DTEC Type S; Civic [12>] Hatchback 1.6 i-DTEC; CR-V [12>] 2.2 16v i-DTEC 4WD.
- **HYUNDAI** i20 [08>] 1.1 CRDi; i30 [12>] 1.4 CRDi, [12>] Kombi 1.4 CRDi.
- **LANCIA** Delta [14>] Restyling 1.6 MJ.
- **MARUTI** Swift [08>] Dzire 1.3 DDis.
- **MERCEDES-BENZ** G [92>] 280 CDI.
- **SEAT** Ibiza [08>] 2.0 16v TDI; Leon [05>12] 2.0 16v TDI.
- **VOLKSWAGEN** Touareg [10>] 4.2i V8 FSI Kat 4Motion
- **VOLVO** S60 II [10>] 1.6 D2 DRIVE; V40 [12>] Cross Country 1.6 D2

# NEW FEATURES FOR THE FAST-FIT DIAGNOSIS

## PASSENGER COMPARTMENT

### A/C / HEATING

**BMW:** 3 [12>] 318 xd, 328 d, 328 xd, 328xi Kat; 6 [11>] Coupè 640xi Kat; 7 [08>] 730i Kat.

**CHEVROLET:** Cruze [09>] Hatchback 1.8i Econoflex Kat, Sedan 1.8i Econoflex Kat; Orlando [11>] 1.4i Turbo Kat.

**CITRÖEN:** Berlingo [08>] 1.6 16v HDI; C4 [04>10] 1.6i 16v BioFlex Kat; C5 [04>08] Restyling 3.0i V6 Kat; Xsara [97>00] 2.0i 16v Kat.

**FIAT:** 500L [12>] 1.4i Turbo Kat GPL; Bravo [07>13] 1.4i 16v Turbo Kat, 1.8i 16v Flex Kat; Idea [03>12] 1.2i 16v Kat; Stilo [01>10] 2.4i Mpi 20v Kat.

**LEXUS:** CT 200h [11>] 1.8i 16v Kat; ES 300h [12>] 2.5i Kat, 350 [12>] 3.5i V6 24v Kat; IS 350 [13>] Sedan 3.5i V6 24v Kat AWD; LFA [10>] 4.8i V10 Kat.

**TOYOTA:** Aqua [11>] Hybrid 1.5i 16v VVT-i Kat; Auris [06>12] 1.8i 16v Kat; Camry [06>11] 2.4i 16v Kat; Corolla [11>] Altis 1.8i 16v Kat; E'Z [12>] 1.8i 16v Kat; Highlander II [07>] Hybrid 3.3i V6 Kat.

### BRAKES/PARKING BRAKE

**PORSCHE:** Cayenne [10>] 3.0 V6 TDI, 3.0i V6 Hybrid Kat, 4.8i V8 Kat 4.8i V8 Turbo Kat.

**AUDI:** A4 [07>] 1.8i TFSI Kat; A5 [09>] Sportback 2.0 16v TDI; Q5 [08>] 2.0 16v TDI quattro.

**HYUNDAI:** Equus [14>] Sedan 5.0i V8 GDi Kat; i30 [12>] 1.4 CRDi, i30 [12>] Kombi 1.6i 16v GDI Kat.

**KIA:** Cee'd [12>] 1.6i GDI Kat, Sportswagon 1.4 CRDi; Optima III [12>] Hybrid 2.0i 16v Turbo Kat Hybrid.

**MASERATI:** Gran Turismo [07>] 4.7i V8 Kat, Gran Turismo [10>] Convertible 4.7i V8 Kat; Quattroporte V [04>12] 4.2i V8 Kat.

**VOLVO** S60 II [10>] 2.5i Turbo Kat T5; S80 II L [09>] 2.0i Turbo Kat T4, 2.0i Turbo Kat T5; V60 [10>] 2.0i Turbo Kat T4.

## ENGINE

**ALFA ROMEO:** 166 [98>08] 2.4 JTD 20v.

**AUDI:** A1 [11>] 2.0 16v TDI, [12>] (8XA) Sportback 2.0 16v TDI; A3 [03>13] 1.8i 16v TFSI Kat; A5 [09>] Cabrio 3.0 V6 TDI quattro; A6 [11>] Avant 3.0 V6 TDI; A8 [11>] 3.0i V6 TFSI Kat quattro.

**CHERY:** Riich [08>] 1.3i Kat.

**CHEVROLET:** Aveo [04>08]; Cruze [09>] Hatchback.

**CHRYSLER:** PT Cruiser [00>10] 2.4i Kat.

**DR:** DR1 [09>] 1.3i 16v Kat Eco-power.

**HONDA:** Accord [03>08] Sedan 2.2 16v CTDi; Brio [11>] 1.2i 16v V-Tec Kat; Civic [12>] Hatchback 1.6 i-DTEC; CR-V [12>] 2.2 16v

i-DTEC 4WD.

**LANCIA:** Delta [14>] Restyling 1.6 MJ.

## BATTERY/STARTER MOTOR

**NISSAN:** Leaf [11>] electric

**PEUGEOT:** 307 [00>05] 1.6i 16v Kat

**SMART:** Fortwo [07>] EV Cabrio Electric Drive

**VOLKSWAGEN:** Golf VII [12>] 2.0i 16v GTI Kat 4Motion; Passat [10>] 2.0 16v TDI BlueMotion; Touareg [10>] 3.0 V6 TDI.

## STEERING AND STEERING COLUMN

**CHEVROLET:** Corvette Convertible [14>] 6.2i V8 Kat, Coupe' [14>] 6.2i V8 Kat.

**ABARTH:** Punto [07>12] 1.4i 16v Turbo Kat Abarth.

**ALFA ROMEO:** Giulietta [10>] 1.4i 16v Turbo Kat.

**BMW:** X1 [09>] 16si Kat; X3 [04>10] 1.8 xd.

**CHEVROLET:** Camaro Cabrio [10>] 3.6i V6 Kat, 6.2i V8 Kat; Camaro Coupe' [10>] 6.2i V8 Kat; Cruze [09>] Hatchback 1.4i Kat.

**MINI:** Mini [13>] Paceman Cooper 1.6i 16v Kat, Paceman Cooper D 1.6 TD, Paceman Cooper D 1.6 TD ALL4, Paceman John Cooper Works 1.6i 16v Turbo Kat.

**MITSUBISHI:** Galant Fortis [07>] 2.0i 16v Turbo Kat 4x4.

## RIDE HEIGHT AND SUSPENSIONS

**BMW:** 1 [12>] M1 3.5xi Kat; 3 [12>] 316 d; 4 [14>] Coupè' 420 d; 5 [09>] Gran Turismo 530 d; 6 [11>] Gran Coupè M6 4.4i V8 Kat.

**CITROEN:** C 5 [08>] 2.7 HDI, 3.0 24v HDI, C 5 [08>] Break 2.0i 16v BioFlex Kat

**LANCIA:** Delta [08>13] 1.4i 16v Turbo Kat GPL, 1.4i 16v Turbo MultiAir Kat, 1.9 MJ TwinTurbo.

**MERCEDES-BENZ:** C [07>] 300i Kat 4 Matic; CLS [11>] Coupè 300i Kat BlueEFFICIENCY; ML [05>] 450 Hybrid 4 Matic; S [05>13] 550i Kat 4 Matic.

## WARNING FOR USERS WHO HAVE OLD GENERATION TOOLS

Due to the evolution of vehicle electronics, the use of new generation TEXA tools, offering state-of-the art technological solutions has, by now, become essential. This is why, for certain new diagnostic systems and for those already present within the previous versions, but updated in this new version, the relative diagnostic operations may not be available using obsolete tools (AXONE 2000, NAVIGATOR CLASSIC, NAVIGATOR MOBILE, AXONE 3 MOBILE with A-DIA module, TRIBOX MOBILE with A-DIA module).

For further information contact your TEXA retailer.

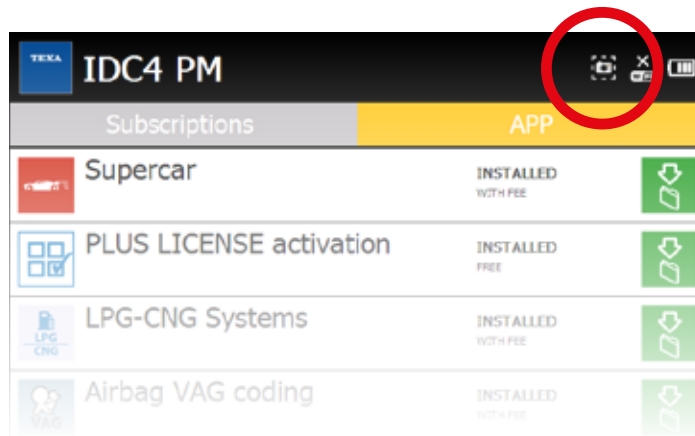
## NEW APPS

### PRINT SCREEN\*



PRINT SCREEN is the new APP by TEXA very useful for mechanics as it allows them to capture any diagnostic screen easily and immediately and to transform it into an image that can be stored and used later on.

You simply have to press the new icon located at the top right in the IDC4 PM to capture the screen; it can be used at any time and at any point throughout the diagnosis. The image is stored in a JPG format and can be easily transferred to a PC.



\*Available only for AXONE 4 Mini.

## TPMS Repair

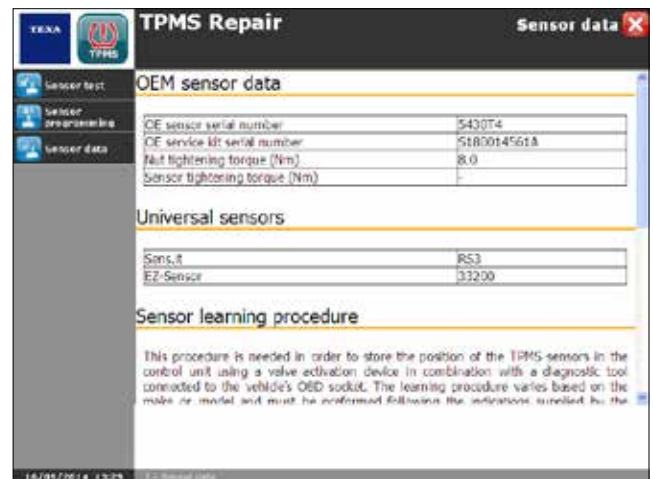
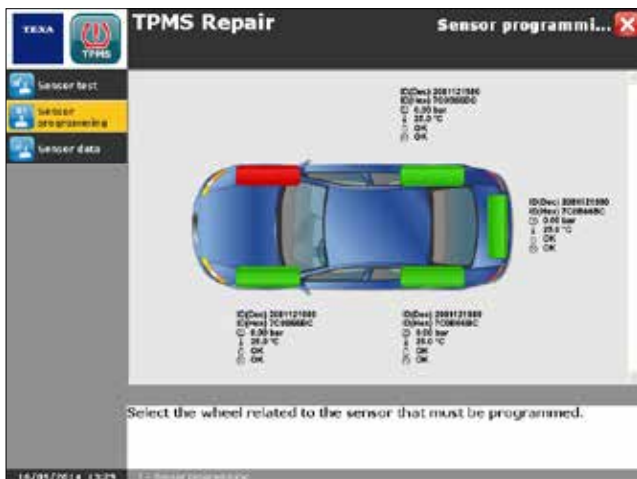


Starting from November 2014 all passenger vehicles must be equipped with the TPMS (Tyre Pressure Monitoring System) in compliance with the European regulations.



By activating the TPMS Repair App in combination with the TPS KEY you are able to perform all the operations related to tyres that tyre shops and FAST-FIT centres carry out daily, such as:

- replacement
- summer/winter rotation
- valve sensor replacement
- crossing to limit wear.



The TPMS Repair APP is available for AXONE 4 and PC. For AXONE 4 Mini starting from version 58. For AXONE S this function is available thanks to the TPS Utility.

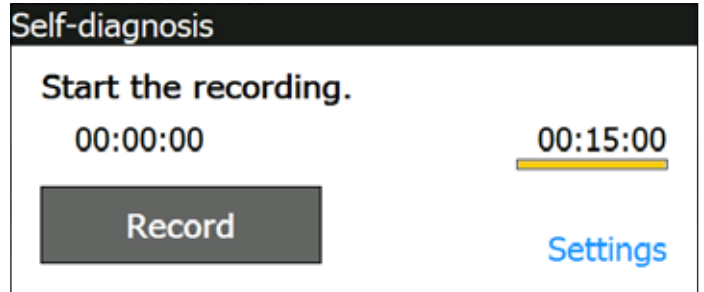
# NEW SOFTWARE FEATURES

## REC&PLAY\*



The Rec&Play function allows you to record during the self-diagnostic session of Parameters, Statuses and Errors.

The stored recordings are filed within the SD card associated to the vehicle's license plate number. You can view them at any time thanks to the new application Recordings Archive which can be launched directly from Self-diagnosis or from the IDC4 PM home screen.



\*Available only for AXONE 4 Mini.

# NEW SPECIAL FUNCTIONS APP FEATURES

The Special Functions APP, available both for AXONE 4 and PC, allows you to quickly access a menu of diagnostic operations that are useful in the workshop,

such as: Remote control/Key Coding, Particulate Filter Regeneration, Dashboard Language Change, Battery Replacement, Brake Pad Replacement. Star-

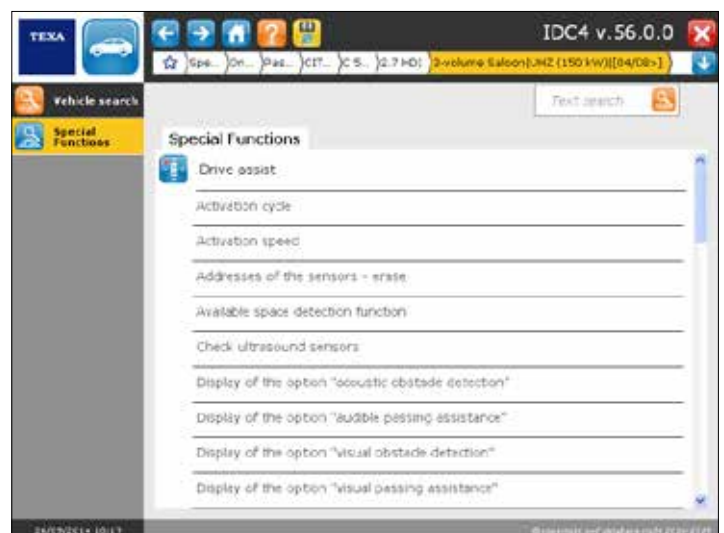
ting from version CAR 56, this APP was implemented with new, useful functions:

## DRIVING ASSISTANCE



Thanks to this new function, it is possible to access all the adaptation and programming functions related to control units that are dedicated to the improvement of driver comfort and safety.

It allows you, for example, to intervene on the adjustment and programming of the front and rear video cameras, on the programming of the parking sensors and also on the control units that control lane departure. All this through precise and prompt messages for the user.





## TPMS



The management of the tyre pressure control is often assigned to control units that do not have anything to do specifically with tyres. There are cases in which the control is managed by the body computer or by the gateway.

In these cases, it could be difficult to access the TPMS sensor control function. Thanks to the TPMS function in the SPECIAL FUNCTIONS the user can access all the TPS tool functions in order to control the operation of the sensors and to eventually replace them and/or read them.

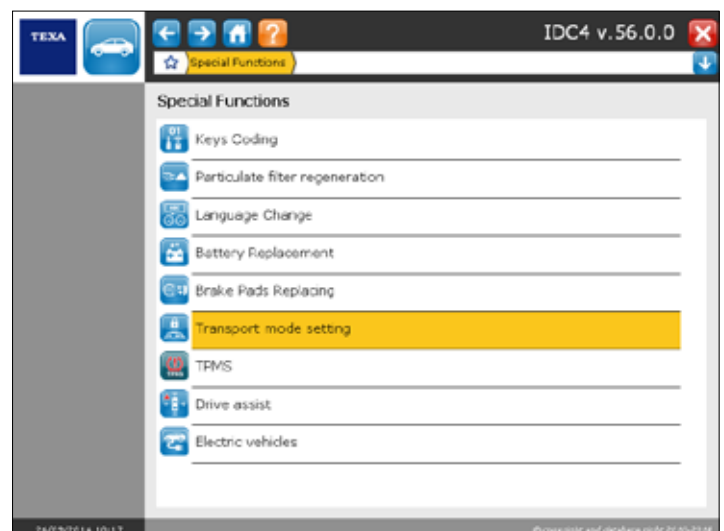


## TRANSPORTATION MODE PROGRAMMING



A very useful function, especially for those who work with new vehicles that are still set in factory mode.

New production vehicles, when they arrive at the dealership, have many functions such as the radio, the central locking and other services that are deactivated. The "transportation mode" function allows you to quickly activate all the vehicle's functions by changing the status from "FACTORY MODE" to "CUSTOMER MODE".

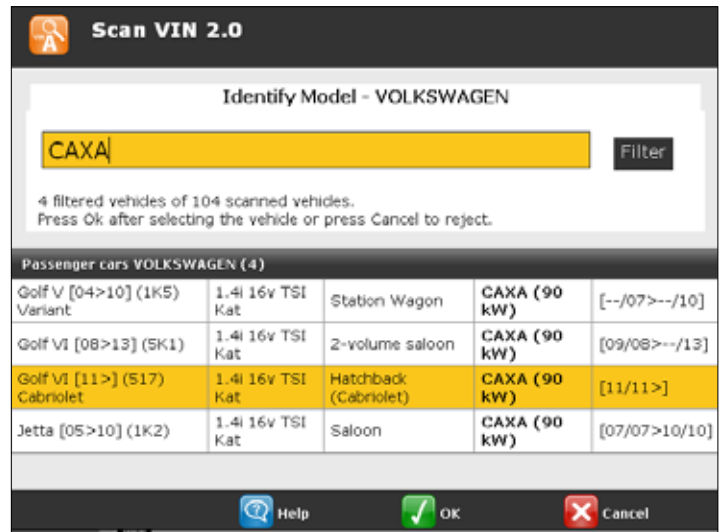


## AUTOMATIC VEHICLE SEARCH



The vehicle search function is very important as it allows you to identify precisely and quickly the model of the vehicle that is being diagnosed. The search can be carried out by launching an automatic scan or by manually inputting the VIN.

Starting from version CAR 56, the function has been developed further and it allows you to launch an aimed vehicle scan directly from the selection menu using a button located beside the make and to refine the search in order to acquire more vehicles by adding the engine code. This allows the technician to achieve an exact identification of the vehicle without losing precious time.



## DYNAMIC PLOTS FOR LPG DIAGNOSIS\*\*



This new function, introduced starting from the IDC4 CAR 56 update, is particularly useful as it allows the technician to change the mapping of the mixture for the LPG injection using interactive plots that are very intuitive and allow you to vary the injection timing.

The function offers other information also, related to the engine speed, the oxygen sensor, the gas injection timing, the petrol injection timing, the gas temperature, the gas pressure.



\*\*The function is not available for AXONE S.



# EXTENDED COVERAGE OF MAKES

VERSION 56

## CARS AND LIGHT COMMERCIALS

ABARTH  
ACURA  
AGRALE  
ALFA ROMEO  
ASTON MARTIN  
AUDI  
AUTOBIANCHI  
BEDFORD  
BIGAS  
BMW  
BSI VEICOLI  
CADILLAC  
CHERY  
CHEVROLET  
CHRYSLER  
CITROËN  
DACIA  
DAEWOO  
DAIHATSU  
DODGE  
DR  
FAW  
FIAT  
FORD  
GAZ  
GONOW  
GREAT WALL  
HONDA  
HUMMER  
HYUNDAI  
IKCO  
INFINITI  
INNOCENTI  
ISUZU  
IVECO  
JAGUAR  
JEEP  
KATAY  
KIA  
LADA

LANCIA  
LAND ROVER  
LANDI RENZO  
LDV  
LEXUS  
LOTUS  
MAHINDRA  
MARUTI  
MAYBACH  
MAZDA  
MERCEDES-BENZ  
MG  
MINI  
MITSUBISHI  
NISSAN  
OPEL (GM)  
PERODUA  
PEUGEOT  
PIAGGIO  
RENAULT

RENAULT SAMSUNG  
ROVER  
SAAB  
SCION  
SEAT  
SKODA  
SMART  
SOLLERS FIAT  
SPERANZA  
SSANGYONG  
SUBARU  
SUZUKI  
TATA  
TOYOTA  
UAZ  
VAZ  
VICTORIA GIOTTI  
VOLKSWAGEN  
VOLVO

## SUPERCAR

ALFA ROMEO  
BENTLEY  
CHEVROLET  
DODGE  
FERRARI  
LAMBORGHINI  
MASERATI  
MORGAN  
PAGANI  
PORSCHE

## LEGEND

 Brands that offer updates in this version	 Brands that do not offer updates in this version
--	--

This document is strictly confidential. All copying, in part or in whole, is strictly forbidden without the prior authorisation of TEXA S.p.A. Future specifications, descriptions and appearances may vary with respect to this brochure. TEXA S.p.A. reserves the right to modify its products without prior notice.

## WARNING

The trademarks and logos of vehicle manufacturers in this document have been used exclusively for information purposes and are used to clarify the compatibility of TEXA products with the models of vehicles identified by the trademarks and logos. Because TEXA products and software are subject to continuous developments and updates, upon reading this document they may not be able to carry out the DIAGNOSTICS of all the models and electronic systems of each vehicle manufacturer mentioned within this document. References to the makes, models and electronic systems within this document must therefore be considered purely indicative and TEXA recommends to always check the list of the "Systems that can be diagnosed" of the product and/or software at TEXA authorized retailers before any purchase. **The images and the vehicle outlines within this document have been included for the sole purpose of making it easier to identify the vehicle category (car, truck, motorbike, etc.) for which the TEXA product and/or software is intended.** The data, descriptions and illustrations may change compared to those described in this document. TEXA S.p.A. reserves the right to make changes to its products without prior notice.



+39 0422 791311



[www.texa.com](http://www.texa.com)



[info.it@texa.com](mailto:info.it@texa.com)



[www.facebook.com/texacom](http://www.facebook.com/texacom)



[www.twitter.com/texacom](http://www.twitter.com/texacom)



[www.youtube.com/texacom](http://www.youtube.com/texacom)



COMPANY WITH  
QUALITY SYSTEM  
CERTIFIED BY DNV  
= ISO 9001 =

The BLUETOOTH brand is the property of Bluetooth SIG, Inc., U.S.A., and is used by TEXA S.p.A. under license.

Copyright TEXA S.p.A. - 10/2014 - Inglese

MADE IN ITALY

