

IDC4 software update

TRUCK 35



The new **IDC4 TRUCK 35** update offered by TEXA is the result of an impressive research and development activity that focused on the most important and widespread worldwide makes of industrial vehicles, light commercial vehicles and buses. The extraordinary coverage guaranteed by the TEXA software dedicated to the TRUCK environment allows repairers worldwide to work with great efficiency and competence on heavy

vehicles.

This new release contains, among the other new features, more new developments regarding the **Euro 6 vehicles of VOLVO, SCANIA, IVECO, RENAULT, MAN, DAF.**

The TRUCK 35 update also offers new useful DASHBOARDS that have a new and more intuitive graphic design starting from this version.

Following are only a few of the most important new diagnostic features in IDC4 TRUCK 35, dedicated to the most important makes in the industry:

VOLVO

FH (4) Eu6, FM (4) FL Eu6

- Diesel Injection: Activations and Injector Coding Adjustment developed.
- Suspensions: Parameter Reading, Activations and Chassis Level Adjustment.
- I-Shift transmission: Activations and Clutch and Transmission Initialisation Adjustments developed.
- EBS: Activations developed.
- External lights: Parameter Reading developed.
- Error Freeze Frame and Parameter Reading, specific for the entire vehicle platform developed.

SCANIA

APS Compressed Air Supply

- Complete development of the system based on the protocol of the manufacturer of the system and reprogramming functions.

EMS S6/S7

- The NOx data Reset Adjustments, SCR warning light reset, Idle Speed Adjustment, Cylinder Balance Test for the Injection system were added.

EMS S8

- Injector Coding.

Eu6 series

- Eu6 R/P/G series was added, complete coverage of all the systems.

IVECO

Daily 2012

- Agile transmission, new development.

Trakker Eu6

- Complete coverage for the new platform added.

RENAULT

- Eu6 "D" range added, complete coverage of all the systems.
- T, K and C range:
 - Error Freeze Frame and Parameter Reading, specific for the

entire vehicle platform developed.

- Diesel Injection: Activations and Injector Coding Adjustment developed.

- Suspensions: Parameter Reading, Activations and Chassis Level Adjustment.

- Transmission: Activations and Clutch and Transmission initialisation Adjustments developed
- EBS: Activations developed.

MAN

Eu6 series TGL, TGX, TGS

- The diagnosis of the first level was developed for the NONOX Emtec AdBlue system.
- Missing Adjustments and Activations added for the Bosch EDC17 Injection system.

DAF

- Freeze Frame reading for Eu6 Diesel Injection optimised.
- ZF Astronic transmission, new development based on DAF protocol.

MERCEDES

Sprinter III (906) M.Y. 2013

- New system for the management of the FSCU2 Supply Pump developed.
- New system for the management of the FSCU1 Supply Pump developed.
- New Ignition Switch system developed.
- New Driver door system developed.

Sprinter (909) Asia

- New development of the instrumentation and CDI4 Injection, ABS Airbag systems.

Sprinter III (906), Viano e Vito (639)

BUS

MERCEDES (EVOBUS)

Citaro Eu6

- Ecolife transmission, new development.
- The diagnosis for the new 2° step Eu6 Injection was added. Travego and Turismo Eu6
- The Euro 6 Injection diagnosis was added. Intouro Eu6, Integro-Eu6 and Conecto Eu6
- Ecolife transmission, new development.
- New Eu6 Diesel Injection added.

SETRA

- Complete coverage of the Eu6 series added for all the models available on the market.
BR 400 Multiclass Eu6

- Missing Adjustments added for the CRD2 Injection system, in particular:

- Activation of the fuel supply pump.
- Throttle valve actuator initialisation.
- Air filter filling level value reset.
- EGR valve Adjustment added for the EDC17c10 Injection system.

Atego-Econic

- Error list update.

Arocs Eu6

- Coverage added for all the systems of the Eu6 platform.

MITSUBISHI

- Ecolife transmission, new development for the new version of the ZF transmission.

BREDAMENARINI

- New model Avancity Plus coverage added.

NEOPLAN

- Euro 3 and Euro 4/5 new model Trendliner coverage added.

MAN

- Ecomat 2 EST 46/47 transmission
- New system development.

HINO

- Series 500 and 700
- Eu5 EVV series AdBlue first

Rosa/ Fighter Eu5

- Automatic transmission and injection system diagnosis added.

FIAT

Ducato x250 3.0 MultiJet

- The diagnosis of the new Ducato x250 FL (Facelift) 2014 was added.
- EDC17cp52, new diagnosis developed for the K-line protocol.

RENAULT/NISSAN/OPEL

- Error list update for the EDC16 injection system.

- level diagnosis.

- First level diagnosis for the Euro 5 EVV Diesel Injection system with DPF Regeneration function.

CUMMINS

Engine Eu5 EEV and Eu6

- DPF Reset and NOx Reset added for Eu6 and EVV injection.
- Tyre circumference and Axle ratio adjustments added on all the variants.

ALLISON

- Diagnosis update for the GEN.3 1000-2000 series.

TGS3s FUNCTION

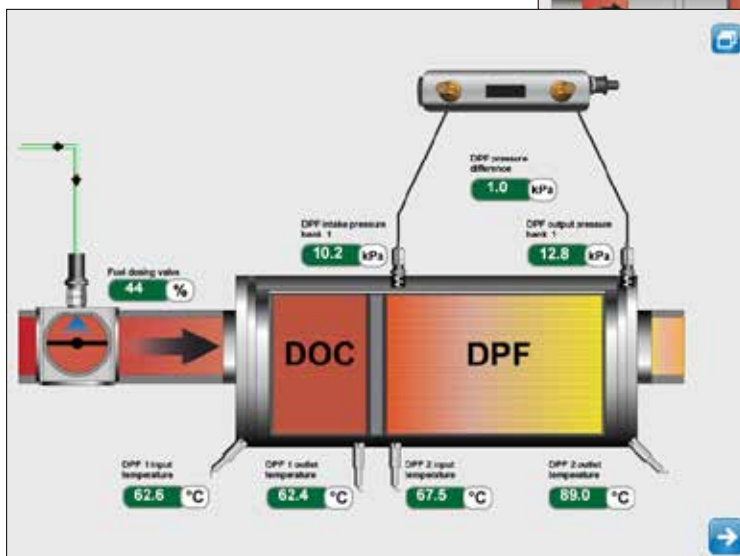
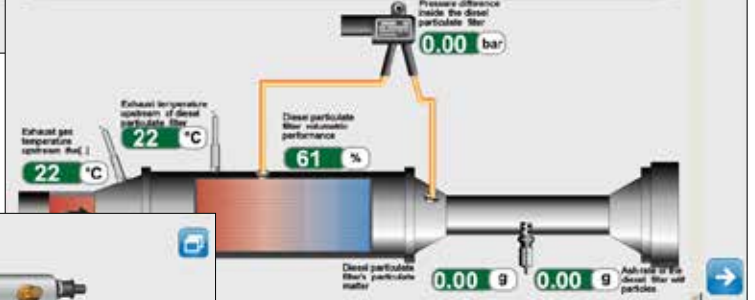
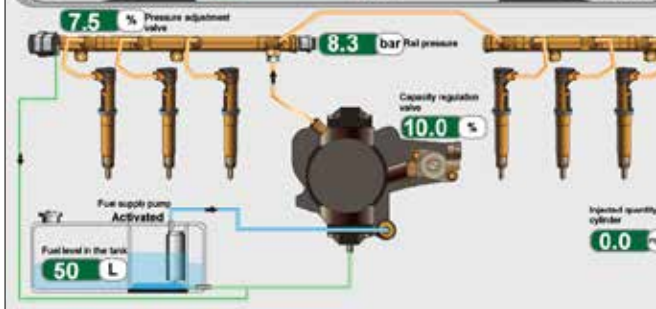
- R series Scania updated.
- System coverage of the Daily (X250) and Fiat Doblò 263. model improved.
- Coverage added for Fiat Ducato
- System coverage of the Daily (X250) and Fiat Doblò 263.

NEW DASHBOARDS

VOLVO: Injection/AdBlue/Particulate Filter System/Automatic Transmission

SCANIA: Injection

Sprinter III (906) M.Y. 2013: Injection



VERSION 35 UPDATE FOR THE US

HINO

Classe 6 and 7 EPA07-13

- DEF EPA 07-13 first level diagnosis.
- First level diagnosis for the EPA 07-13 Diesel Injection system with DPF Regeneration function.

DETROIT

- DP EGR valve and DPF reset implemented fir EPA 98-04 engines.

ISUZU

- Speed limit and Injector coding adjustment added for all the ISUZU Epa04-07 variants.
- All the adjustments such as

PTO management and Idle adjustment were implemented for all the Isuzu EPA10-13 variants.

FORD

- International LCF Injection system added.

INTERNATIONAL

- Basic diagnosis implemented fir the new N13 EPA13 engine.
- Injection system added for the City Star CF600 model.

CUMMINS

- DPF Reset and NOx Reset added for Core 2 injection.
- Tyre circumference and Axle

ratio adjustments added on all the variants.

ALLISON

- Diagnosis update for the GEN.3 1000-2000 series.

HALDEX

- New EBS Trailers EB+ system developed for applications in North America.

HD Scan Tool PowerTrain

- New system developed for the complete scan of the systems with error reading, Parameters and Activations based on the SAE protocols.

NEW DASHBOARDS for NORTH AMERICA (38)

DETROIT: Injection, VGT turbine

transmission

FREIGHTLINER: Injection

Sprinter III (906) M.Y. 2013:

ISUZU: DPF/SCR

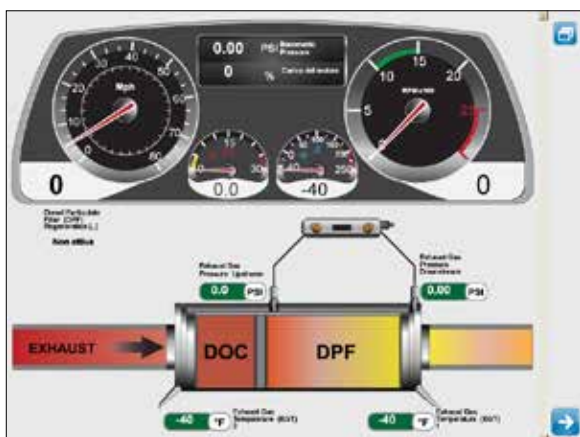
VOLVO: Injection/AdBlue/particulate filter system/automatic

Injection

MAXXFORCE: Injection

SCANIA: Injection

NAVISTAR: Injection



NEWS FOR TECHNICAL BULETINS AND ELECTRICAL DIAGRAMS

This update also includes **23 new sheets** containing technical bulletins and service reset procedures. Following are some of them:

- EAS3 Injection system sheet for DAF XF Eu6
- ACC system sheet for Volvo FH16
- Service reset for Mercedes ATEGO2/AXOR2
- Manual service reset procedure for Renault Mascott DXI Euro 4/5
- A460-A465 automatic transmission initialisation for Isuzu North America, Series N
- Remote control programming bulletin for Volvo FH
- EAS3 Injection system sheet for Paccar EPA13

105 electrical diagrams have been developed and added. Following are some of them:

- Caterpillar C7/C9/C12/C15/C16/C18 engine injection for Volvo Truck, International, Kamaz, Freightliner
- VIC3 series engine vehicle control unit for DAF XF 105
- Paccar PMCI 2 EPA10/13 injection
- Isuzu North America engine injection for the Transtron variants and the Isuzu manufacturer
- GMC engine injection
- Cummins EPA98-04 engine injection for the make Mack
- Cummins engine injection for the manufacturers Peterbilt and Kenworth.

WARNING FOR USERS WHO HAVE OLD GENERATION TOOLS

Although TEXA tries its best to keep its "old generation" diagnostic tools updated through an active subscription (for example NAVIGATOR MOBILE and TRIBOX with A-DIA module), the electronics in modern vehicles is often very complex and requires diagnostic tools with advanced technological features. For this reason, for some new systems, some advanced diagnostic operations could not be available using "old generation" tools.

For further information, contact your local retailer.

NEW APPS: DUAL MODE FOR PC

DUAL MODE is the innovative function that lets you connect and view parameters on two different interfaces simultaneously: for example, self-diagnosis can be performed on a component whilst the signal is studied with an oscilloscope. With this application, TEXA provides a more ample view during vehicle tests and diagnostics.



For further details on these functions and on their applicability to vehicles, visit:
www.texa.com/coverage

EXTENDED COVERAGE OF MAKES

VERSIONE 35

TRUCK

AGRALE
ASTRA
AUTOCAR
BEIFANG BENCHI
BREMACH
BUCHER-SCHÖRLING
CARMICHAEL
CVS FERRARI
DAEWOO AVIA
DAF
DENNIS EAGLE
DODGE
DONGFENG
DULEVO
E-ONE
EFFEDI
ERF
FAW
FODEN
FORD
FREIGHTLINER
GAZ
GMC
HINO
HYUNDAI
INTERNATIONAL
ISUZU
IVECO
IVECO (LATIN AMERICA)
IVECO DVD
JOHNSTON
KALMAR
KAMAZ
KENWORTH
KMW
LIEBHERR
MACK
MAN

MAZ
MERCEDES-BENZ
MERCEDES-BENZ
(BRASIL / ASIA PACIFIC)
MITSUBISHI FUSO
MULTICAR
NISSAN (EUROPEAN
MARKET)
O.ZETA CLES
PETERBILT
RENAULT TRUCKS
SCANIA
SHAANXI
SHACMAN
STERLING
TADANO FAUN
TATRA
TERBERG
TEREX
UD TRUCKS (NISSAN
DIESEL)
VOLKSWAGEN TRUCKS
VOLVO TRUCKS
WESTERN STAR

BUS

AGRALE
ALEXANDER DENNIS
ALLEGRO
AUTODROMO
AUTOSAN
AYATS
BARBI
BCI
BEIFANG BENCHI
BEULAS
BLUE BIRD
BMC
BREDAMENARINI

CACCIAMALI
CAIO
CASTROSUA
COMIL
CROBUS
DAEWOO BUS
DALLA VIA
DE SIMON
FAST
FIAT
GOLDEN DRAGON
GULERYUZ
HEULIEZ BUS
HINO
HYUNDAI
IRISBUS
IRIZAR
ISUZU
IVECO
KAMAZ
KING LONG
LEXEA
LIAZ
MAN
MARCOPOLO
MAZ (BUS)
MERCEDES-BENZ
MERCEDES-BENZ (BRASIL)
MERCEDES-BENZ (EVOBUS)
MERKAVIM
MITSUBISHI FUSO
NEOPLAN
NOGE
OPTARE
OTOKAR
PAZ
RAMPINI
RENAULT BUS
SCANIA

SETRA
SHENLONG
SOLARIS
SOLBUS
SOR
SUNSDGQUI
TATA
TCV
TEMSA
TOYOTA
TOYOTA CAETANO
TVM-MARBUS
VAN HOOL
VDL BERKHOF
VDL BOVA
VDL BUS
VDL BUS & COACH
VDL JONCKHEERE
VISEON
VOLARE
VOLKSWAGEN BUS
VOLVO TRUCKS
VOLZHANIN
WRIGHT BUS
YUTONG

LIGHT VEHICLES

AGRALE
BSI VEICOLI
CITROËN
DACIA
DAIHATSU
DODGE
FIAT
FORD
HYUNDAI
IVECO
IVECO LATIN AMERICA LCV
KIA

LDV
MERCEDES-BENZ
MERCEDES-BENZ (EVOBUS)
MITSUBISHI
NISSAN
OPEL (GM)
PEUGEOT
RENAULT
SEAT
SKODA
SOLLERS FIAT
SUZUKI
TOYOTA
VOLKSWAGEN

TRAILER AND SEMI TRAILERS

BPW
BREMACH
HALDEX
KNORR
THERMOKING
WABCO
WRIGHT BUS

POWER TRAIN

CATERPILLAR
CUMMINS
DETROIT
DEUTZ
FPT (IVECO MOTORS)
INTERNATIONAL
PACCAR
SCANIA
VM MOTORI
VOITH
VOLVO PENTA

LEGEND

 Brands that offer updates in this version	 Brands that do not offer updates in this version
--	--

This document is strictly confidential. All copying, in part or in whole, is strictly forbidden without the prior authorisation of TEXA S.p.A. Future specifications, descriptions and appearances may vary with respect to this brochure. TEXA S.p.A. reserves the right to modify its products without prior notice.

WARNING

The trademarks and logos of vehicle manufacturers in this document have been used exclusively for information purposes and are used to clarify the compatibility of TEXA products with the models of vehicles identified by the trademarks and logos. Because TEXA products and software are subject to continuous developments and updates, upon reading this document they may not be able to carry out the DIAGNOSTICS of all the models and electronic systems of each vehicle manufacturer mentioned within this document. References to the makes, models and electronic systems within this document must therefore be considered purely indicative and TEXA recommends to always check the list of the "Systems that can be diagnosed" of the product and/or software at TEXA authorized retailers before any purchase. **The images and the vehicle outlines within this document have been included for the sole purpose of making it easier to identify the vehicle category (car, truck, motorbike, etc.) for which the TEXA product and/or software is intended.** The data, descriptions and illustrations may change compared to those described in this document. TEXA S.p.A. reserves the right to make changes to its products without prior notice.



+39 0422 791311



www.texa.com



info.it@texa.com



www.facebook.com/texacom



www.twitter.com/texacom



www.youtube.com/texacom

TEXA

COMPANY WITH
QUALITY SYSTEM
CERTIFIED BY DNV
= ISO 9001 =

The BLUETOOTH brand is the property of Bluetooth SIG, Inc., U.S.A., and is used by TEXA S.p.A. under license.

Copyright TEXA S.p.A. - 02/2015 - Inglese

MADE IN ITALY

