

# IDC4E software update

## **TRUCK 38.0.0**



The world of industrial and commercial vehicles and buses is featured by constant innovations, even as far as developments connected to the electronic equipment is concerned. These developments include all the control units that manage the mechanical parts and assure they work properly on each vehicle. Therefore it is very important for all technical repairers to have appropriate diagnostic tools in order to be able to work on most of the vehicles successfully.

Thanks to the new **IDC4E TRUCK 38** update that has just been released by TEXA, you can work on the most important and widespread vehicle makes with great efficiency.

The TRUCK 38 update offers new very useful Wiring Diagrams and DASHBOARDS.

## NEW DIAGNOSTIC FEATURES

Following are only a few of the most important new diagnostic features in IDC4E TRUCK 38, dedicated to the most important makes in the industry and to the European and North American markets:

### EUROPEAN MARKET

#### DAF

##### **LF EVV and EU6:**

- New adjustment and activation functions were developed for the PACCAR CUMMINS Isbe Injection EEV and Eu6 system.

##### **XF and CF EU6:**

- New adjustments and activations were included, among which the VIN Writing for the PCI 2015 injection system.

#### FORD

##### **Transit 2014, Transit Connect 2014 and Custom:**

- The Trailer Module TRM, Front Control Display Interface Module FCDIM, Driver's side running board, Parking Aid Module PAM, Headlight Control Module HCM, Satellite navigation system, Auxiliary Heater Control module AHCM, Audio Control Module ACM systems were developed.

##### **Transit Connect 2014:**

- The new SID 208 system for 1.6TDCi engines

was developed.

##### **Cargo (South America):**

- New functions on the ABS8 systems.

#### HYUNDAI

##### **H series: Light Duty Truck [HD35>HD78]:**

- The Immobilizer, (DTG) Central display, ABS Mobis systems were developed.

#### IVECO

##### **Daily 2014:**

- The new 8-speed transmission (8HP) system was developed

- The "Engine test" activations were added in the related diagnosis.

##### **Daily 2012:**

- The "Engine test" activations were added in the related diagnosis.

##### **Daily 2009:**

- The "Engine test" activations were added for the EDC17 engine control unit.

## **Eurocargo Restyling EU3**

- The new configuration change, PTO setting change, accelerator pedal calibration, engine idle speed value setting adjustments were added for the EDC7 Diesel Injection system.

## **Stralis EU6:**

- New variants for the EDC17CV41 injection control unit were developed.

## **MAN**

### **TG-L and TG-M:**

- New safety error memory clearing and control unit replacement functions were developed in the Wabco EBS2 system.

### **EU6 range:**

- Error list update for all the Powertrain systems.
- The management of the Reset functions of the new maintenance system was improved.
- The new Emitec NoNOx exhaust gas treatment system was developed.

## **MERCEDES-BENZ**

### **Actros MP11/MP13:**

- The front axle activations were included in the "HM Rear module + Suspensions" control unit;
- The new LWS Steering angle sensor system was developed.

### **Actros MP14/Antos/Arocs EU6/Atego EU6/Eonic EU6**

- The new PPC Predictive Powertrain Control system was developed.

## **NISSAN/RENAULT**

### **Nissan NV400 and Renault Master 3:**

- The new EDC17C42 EU5+ injection system was developed.

## **RENAULT**

### **Series DXI:**

- Update of many systems installed on the Magnum and Premium DXI Eu5 models.

## **SCANIA**

### **EU6 models:**

- The exhaust gas treatment EEC3, suspension ELC4, transmission control GMS-OPC5 were developed.

## **VOLARE**

### **W12/W8/W9:**

- The new Instrumentation system with the Reset Service function was developed.

## **VOLKSWAGEN**

### **Crafter:**

- The new system with 2.0BiTDI engine management was developed.

## **VOLKSWAGEN TRUCKS**

- New functions on the ABS8 systems
- The new ABS6 system was developed.

## **VOLVO TRUCK**

### **FH and FM:**

- Update of the diagnostic platform installed on the Euro 5 models.

# NORTH AMERICAN MARKET

## TGS3s System Scan

- The System Scan function, which will be able to support a larger number of control units and protocols, was optimised and made more performing, offering the actual electronic equipment in the vehicle and the status of each system in a few seconds.

## CATERPILLAR ENGINE

- The Trim Injector coding function was developed for the control unit variants that support it.

## DODGE

### Promaster:

- New EDC17CP52 EPA 07/10/13 Injection system.

### Promaster City:

- New petrol engine management system.

## FORD

- New Ford Transit Connect 2009, Ford Transit Connect 2014 and Transit 2014 models were included.

## MERCEDES-BENZ

### Sprinter (906) USA:

- New Bosch CDI43 EPA14 injection system;  
- New variants for the SCR2 System were developed.

## DETROIT DIESEL

- New Ash accumulation reset and SCR accumulation reset adjustments were included.

## FREIGHTLINER

- New functions were included for the chassis and cabin systems: alternator charge indicator I/O control, ignition signal I/O control, diesel filter water separation I/O control.

## ISUZU NORD AMERICA and GMC

- The diagnosis of the systems installed on the models produced for 2016 was Updated.

## MITSUBISHI FUSO

### Series FE:

- New Injection system with CAN and K protocol;  
- New Control Module system.

## HINO

### EPA 98/04:

- The particulate filter regeneration was added.

## VOLVO TRUCK

- Update of the diagnostic platform installed on the EPA10-13 models produced up to 2014.

## HD SCAN TOOL

- The HD Scan Tool function was improved for the control units with the standard J1708 and J1939 protocol, now allowing the diagnosis of all the systems that could be installed belonging either to the PowerTrain or Body.

- The "Trip Data" reading function and related Reset was implemented for the control units that support this function, offering the interpretation of the stored trip data through table diagrams that feature IDC4E.

# NEW wiring diagrams

## Scania series R/P/G:

- S8 engine management system, tyre pressure monitoring system, compressed air supply, ICL Instrument Cluster, CCS Climate Control System, COO Coordinator module 7, DTCO Tachograph, EEC3 Exhaust gas treatment system.

## Scania series R/P/G EU6:

- S8 engine management system, 5.0 brake management system, tyre pressure monitoring system, SMS-ELC4 Suspension Management System, compressed air supply, EEC3 Exhaust gas treatment system, ICL Instrument Cluster, COO 7 Coordinator module, GMS Gearbox Management System OPC, DTCO Tachograph, CCS Climate Control System.

## Volkswagen Trucks:

Cummins ISBe Injection  
Cummins ISCe Injection  
16C8 injection for models 5-140/8-150  
EDC7C1 injection for 6 and 4 cylinder models  
PTM Power Train Module.

## Cummins:

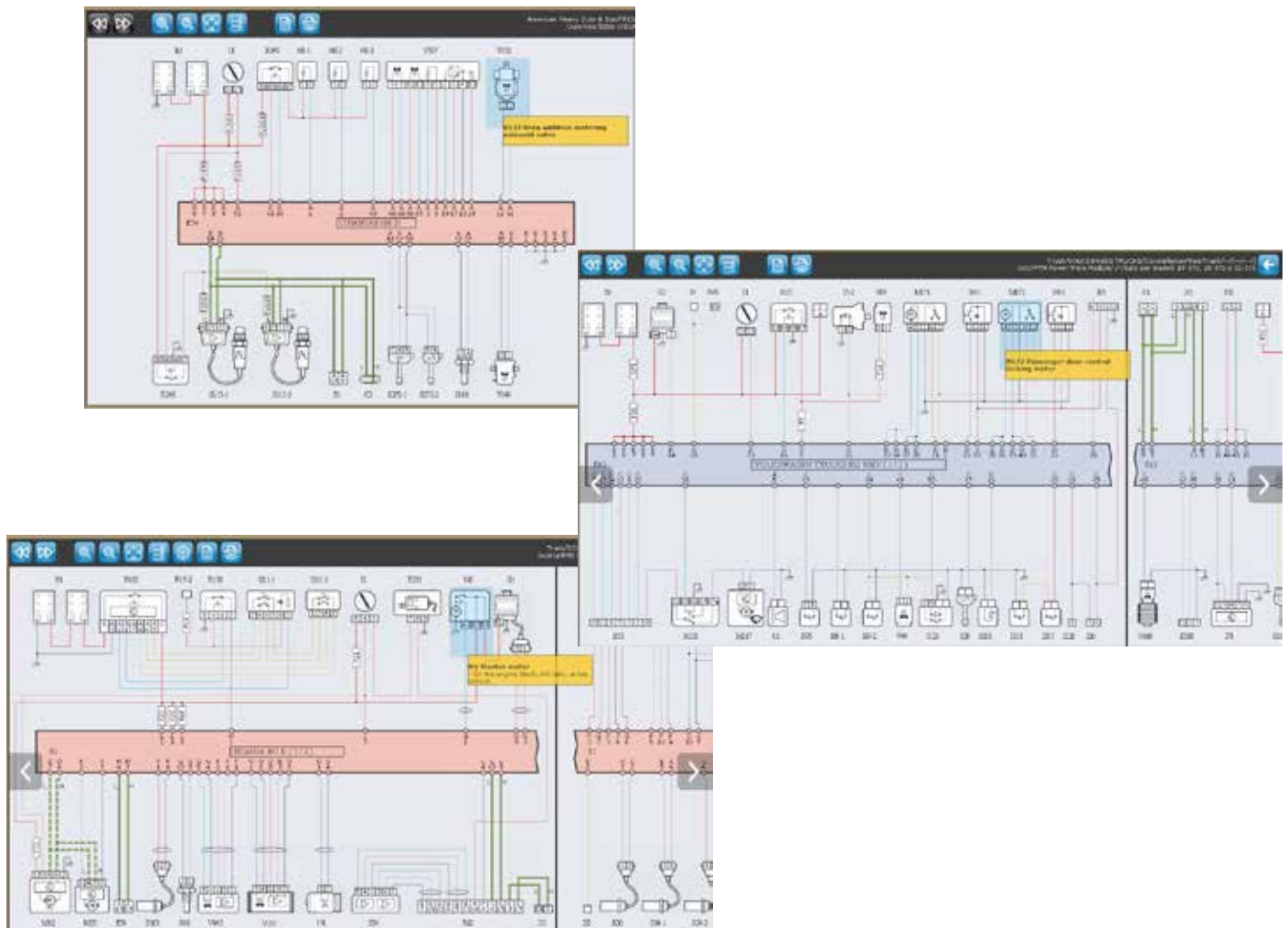
Cummins ISB/ Cummins ISB CM2150-CM850 / ISBe 4 and 6 cylinder/ISB4.5-6.7 injection systems.

## Mercedes-Benz

The connector was added on the Actros MPIV MCM system

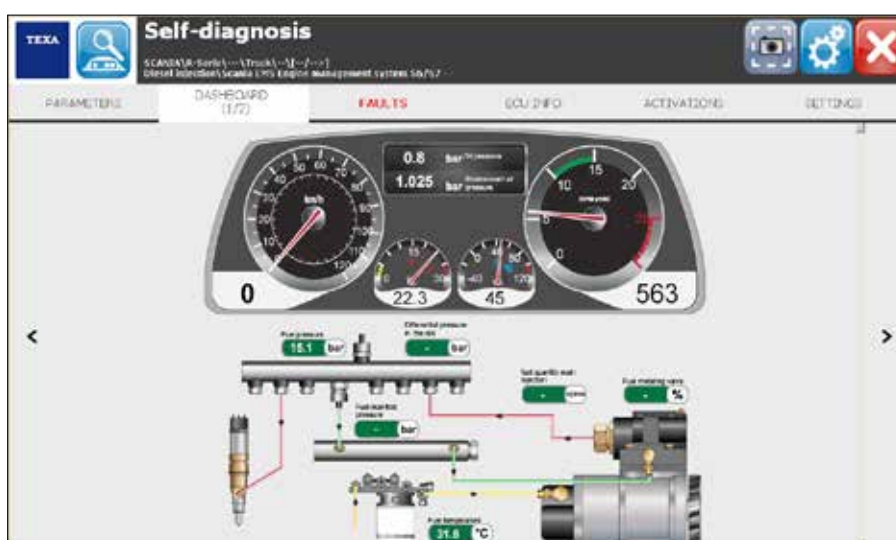
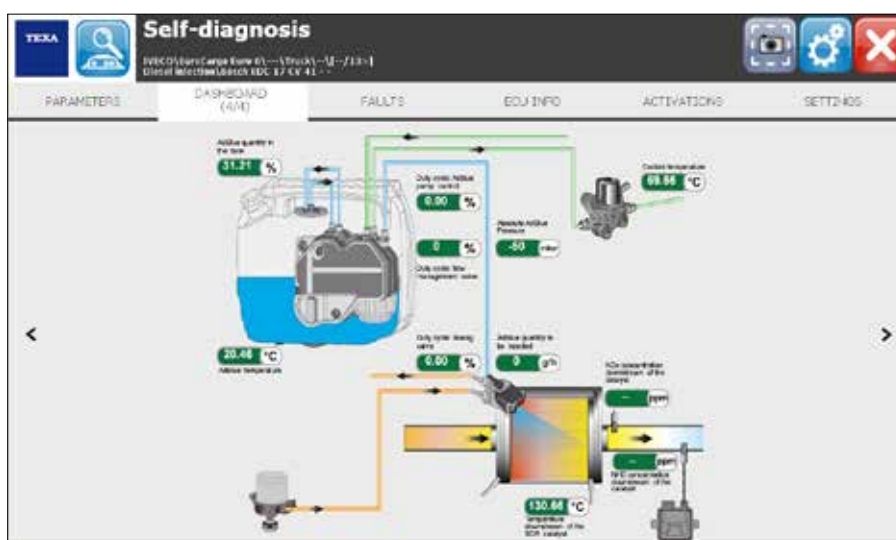
The connector was added on the Actros MPIV ACM system

Extension of the Brazilian models.



# NEW DASHBOARDS

- DAF EAS1 system.
- Some previous DASHBOARDS were reviewed.



## **WARNING FOR USERS WHO HAVE OLD GENERATION TOOLS**

We also wish to inform you that, although TEXA tries its best to keep its "old generation" diagnostic tools updated through an active subscription (for example NAVIGATOR MOBILE and TRIBOX with A-DIA module), the electronics in modern vehicles is often very complex and requires diagnostic tools with advanced technological features. For this reason, for some new systems, some advanced diagnostic operations could not be available using "old generation" tools. For further information, contact your local retailer.

N.B. As we have already informed you previously, starting from January 1st 2016, the CAR, TRUCK and BIKE versions will no longer support the AXONE 3, MULTI PEGASO, PEGASO EXPANDER, PEGASO MOBILE platforms. Furthermore, starting from the same date, the CAR and TRUCK versions will no longer support the AXONE 2000 diagnostic tool.

For further details on these functions and on their applicability to vehicles, visit:  
**[www.texa.com/coverage](http://www.texa.com/coverage)**

# EXTENDED COVERAGE OF MAKES

## VERSION 38

### TRUCK

AGRALE  
 ASTRA  
 AUTOCAR  
 BEIFANG BENCHI  
 BREMACH  
 BUCHER-SCHÖRLING  
 CARMICHAEL  
 CVS FERRARI  
 DAEWOO AVIA  
 DAF  
 DENNIS EAGLE  
 DODGE  
 DONGFENG  
 DULEVO  
 E-ONE  
 EFFEDI  
 ERF  
 FAW  
 FODEN  
 FORD  
 FREIGHTLINER  
 FRESIA-METROCAB  
 GAZ  
 GMC  
 GROVE  
 HINO  
 HYUNDAI  
 INTERNATIONAL  
 ISUZU  
 ISUZU (North America)  
 IVECO  
 IVECO (LATIN AMERICA)  
 IVECO DVD  
 JOHNSTON  
 KALMAR  
 KAMAZ  
 KENWORTH  
 KMW  
 LIEBHERR  
 MACK  
 MAN  
 MAZ

MERCEDES-BENZ  
 MERCEDES-BENZ  
 (BRASIL / ASIA PACIFIC)  
 MITSUBISHI FUSO  
 MULTICAR  
 NISSAN (EUROPEAN  
 MARKET)  
 O.ZETA CLES  
 PETERBILT  
 RENAULT TRUCKS  
 SCANIA  
 SHAANXI  
 SHACMAN  
 STERLING  
 TADANO FAUN  
 TATA DAEWOO  
 TATRA  
 TERBERG  
 TEREX  
 UD TRUCKS (NISSAN  
 DIESEL)  
 VOLKSWAGEN TRUCKS  
 VOLVO TRUCKS  
 WESTERN STAR

### BUS

AGRALE  
 ALEXANDER DENNIS  
 ALLEGRO  
 AMZ  
 AUTODROMO  
 AUTOSAN  
 AYATS  
 BARBI  
 BCI  
 BEIFANG BENCHI  
 BEULAS  
 BLUE BIRD  
 BMC  
 BREDAMENARINI  
 CACCIAMALI  
 CAIO  
 CASTROSUA

COMIL  
 CROBUS  
 DAEWOO BUS  
 DALLA VIA  
 DE SIMON  
 FAST  
 FIAT  
 GOLDEN DRAGON  
 GULERYUZ  
 HEULIEZ BUS  
 HINO  
 HYUNDAI  
 IRISBUS  
 IRIZAR  
 ISUZU  
 IVECO  
 IVECO LATIN AMERICA  
 KAMAZ  
 KING LONG  
 LEXEA  
 LIAZ  
 MAN  
 MARCOPOLO  
 MAZ (BUS)  
 MERCEDES-BENZ  
 MERCEDES-BENZ (BRASIL)  
 MERCEDES-BENZ (EVOBUS)  
 MERKAVIM  
 MITSUBISHI FUSO  
 NEFAZ  
 NEOPLAN  
 NOGE  
 OPTARE  
 OTOKAR  
 PAZ  
 RAMPINI  
 RENAULT BUS  
 SCANIA  
 SETRA  
 SHENLONG  
 SOLARIS  
 SOLBUS  
 SOR

SUNSDEGUI  
 TATA  
 TCV  
 TEMSA  
 TOYOTA  
 TOYOTA CAETANO  
 TVM-MARBUS  
 VAN HOOL  
 VDL BERKHOF  
 VDL BOVA  
 VDL BUS  
 VDL BUS & COACH  
 VDL CHASSIS  
 VDL JONCKHEERE  
 VISEON  
 VOLARE  
 VOLKSWAGEN BUS  
 VOLVO TRUCKS  
 VOLZHANIN  
 WRIGHT BUS  
 YUTONG

### LIGHT VEHICLES

AGRALE  
 BSI VEICOLI  
 CHEVROLET  
 CITROËN  
 DACIA  
 DAIHATSU  
 DODGE  
 FIAT  
 FORD  
 GREAT WALL  
 HYUNDAI  
 IVECO  
 IVECO LATIN AMERICA  
 LAND ROVER  
 LCV  
 KIA  
 LDV  
 MAHINDRA  
 MERCEDES-BENZ  
 MERCEDES-BENZ (BRASIL /

ASIA PACIFIC)  
 MERCEDES-BENZ (EVOBUS)  
 MITSUBISHI  
 NISSAN  
 OPEL (GM)  
 PEUGEOT  
 RENAULT  
 SEAT  
 SKODA  
 SOLLERS FIAT  
 SSANGYONG  
 SUZUKI  
 TOYOTA  
 VOLKSWAGEN

### TRAILER AND SEMI TRAILERS

BPW  
 BREMACH  
 HALDEX  
 KNORR  
 THERMOKING  
 WABCO  
 WRIGHT BUS

### POWER TRAIN

ALLISON  
 CATERPILLAR  
 CUMMINS  
 DETROIT  
 DEUTZ  
 EBERSPACHER  
 FPT (IVECO MOTORS)  
 INTERNATIONAL  
 MERCEDES-BENZ  
 PACCAR  
 SCANIA  
 VM MOTORI  
 VOITH  
 ZF  
 VOLVO PENTA  
 WEBASTO  
 WABCO

### LEGEND

Brands that offer updates in this version	Brands that do not offer updates in this version
---	--

This document is strictly confidential. All copying, in part or in whole, is strictly forbidden without the prior authorisation of TEXA S.p.A. Future specifications, descriptions and appearances may vary with respect to this brochure. TEXA S.p.A. reserves the right to modify its products without prior notice.

### WARNING

The trademarks and logos of vehicle manufacturers in this document have been used exclusively for information purposes and are used to clarify the compatibility of TEXA products with the models of vehicles identified by the trademarks and logos. Because TEXA products and software are subject to continuous developments and updates, upon reading this document they may not be able to carry out the DIAGNOSTICS of all the models and electronic systems of each vehicle manufacturer mentioned within this document. References to the makes, models and electronic systems within this document must therefore be considered purely indicative and TEXA recommends to always check the list of the "Systems that can be diagnosed" of the product and/or software at TEXA authorized retailers before any purchase. **The images and the vehicle outlines within this document have been included for the sole purpose of making it easier to identify the vehicle category (car, truck, motorbike, etc.) for which the TEXA product and/or software is intended.** The data, descriptions and illustrations may change compared to those described in this document. TEXA S.p.A. reserves the right to make changes to its products without prior notice.



+39 0422 791311



www.texa.com



info.it@texa.com



www.facebook.com/texacom



www.twitter.com/texacom



www.youtube.com/texacom



**COMPANY WITH  
 QUALITY SYSTEM  
 CERTIFIED BY DNV  
 = ISO 9001 =**

The BLUETOOTH brand is the property of Bluetooth SIG, Inc., U.S.A., and is used by TEXA S.p.A. under license.

Copyright TEXA S.p.A. - 01/2016 - Inglese

MADE IN ITALY

