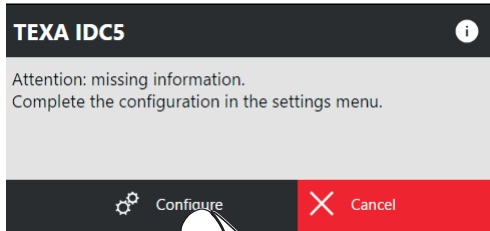
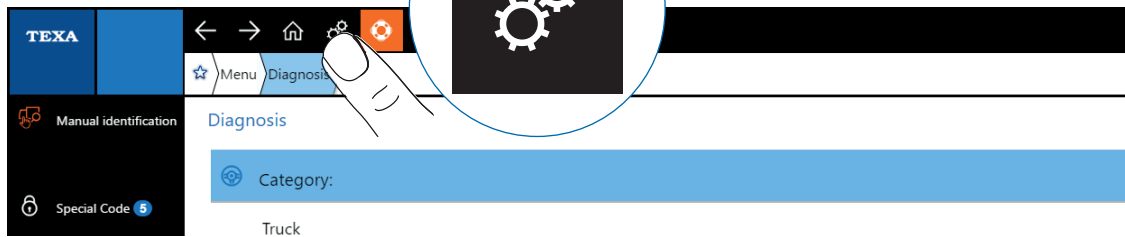




1a



1b



Select the application and press ENTER



2

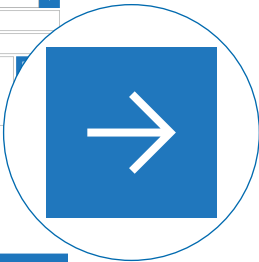
Configuration Wizard

Welcome to the Configuration Wizard

Personal information

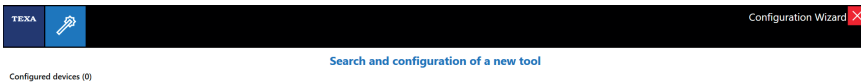
Enter the information requested. The data entered will be used on all the prints.

Company name			
Address	Street number	Postcode	Province
City	Italia		
Phone number	Mobile phone	Fax number	
Email			
LEONARDO			

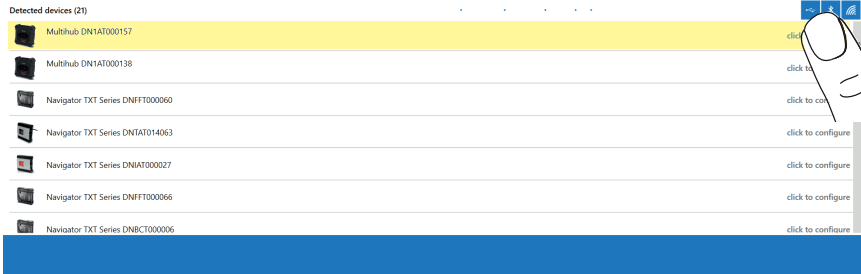




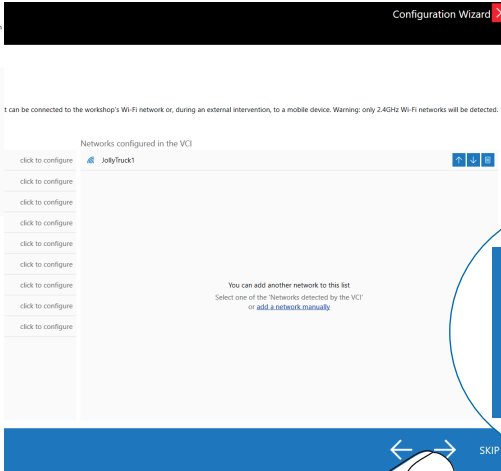
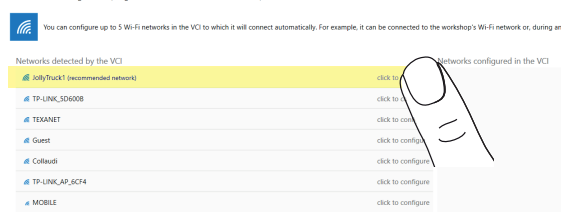
3



Premere sul TXT da configurare.  
 Press on the TXT that must be configured.  
 Appuyer sur le TXT à configurer.  
 Auf den zu konfigurierenden TXT drücken.  
 Presionar en el TXT que se debe configurar.



4



5



The tool just configured will be available through these interfaces:



Se la modalità di comunicazione non è attiva premere:  
 If the communication mode is not active, press:  
 Si la modalit  de communication n'est pas activ e, appuyer sur :  
 Wenn der Kommunikationsmodus nicht aktiviert ist, dr cken Sie auf:  
 Si la modalidad de comunicaci n no est  activa presionar:

